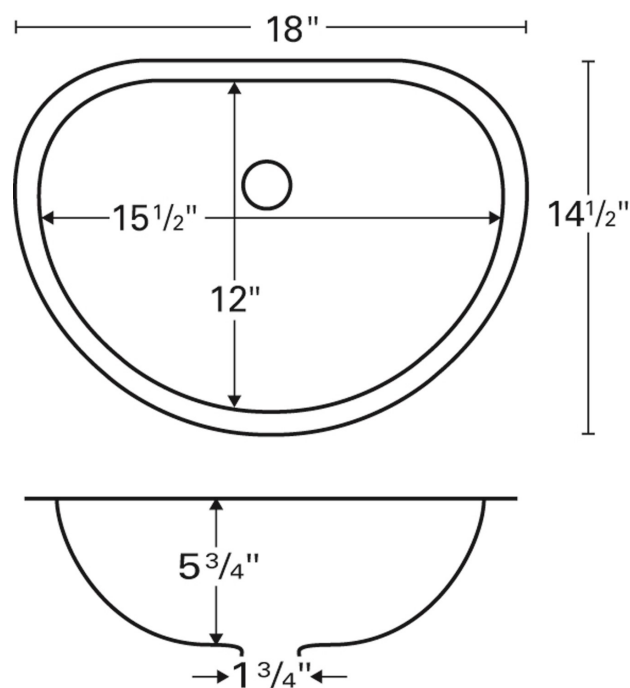


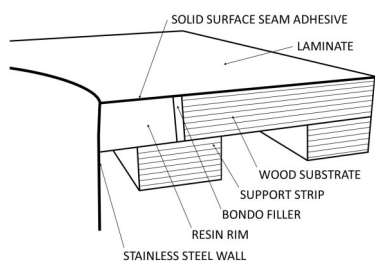
Karran Edge Series stainless steel sinks are manufactured from durable 18 gauge stainless steel that makes them tough and resilient to even the toughest daily tasks. Each Edge sink has a patented resin matrix rim that allows it to be seamlessly integrated into all laminate and solid surface countertop materials. Seamless integration is the most hygienic way to install a sink into a countertop in both residential and commercial applications.

Series:	Edge 300 Series
Material:	18 Gauge, Type 304 stainless steel
Installation Type:	Seamless undermount
Configuration / Style:	ADA compliant vanity bowl
Finish:	Soft satin brushed finish
Overall dimensions:	18" x 14-1/2"
Bowl dimensions:	15-1/2" x 12" x 5-3/4"
Drain size:	1-3/4"
Min. cabinet size:	21"
Template included:	No
Clips included:	No
Accessories included:	No

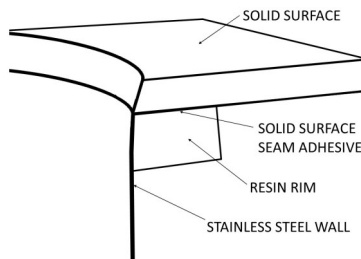


INSTALLATION OPTIONS

IN LAMINATE



IN SOLID SURFACE



Laminate Install Guide	Solid Surface Install Guide	DXF File	Care Guide	Warranty
---------------------------	--------------------------------	----------	---------------	----------

PROJECT INFORMATION

PROJECT: _____

CONTACT: _____

DATE: _____

NOTES: _____

APPROVAL: _____

RECOMMENDED TOOLING FOR INSTALLATION

- 10° Bevel bit [BITLAM]-Laminate installs
- 24° Bevel bit [BITSS24]-Solid surface installs
- Seam adhesive [BRISA]
- Adhesive gun [AG]
- Non-woven flap wheel [FLAP3X2FINE]

OPTIONAL ACCESSORIES

- Grid drain with overflow [DRAIN-GRID-OF]
- Pop-up drain with overflow [DRAIN-POP-OF]
- Pop-up drain without overflow [DRAINPOP]